

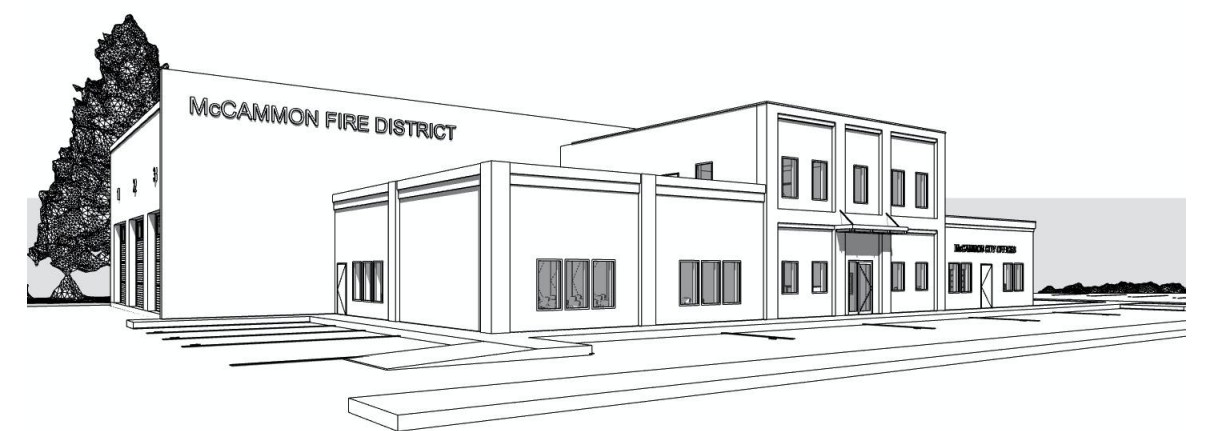
North Approach



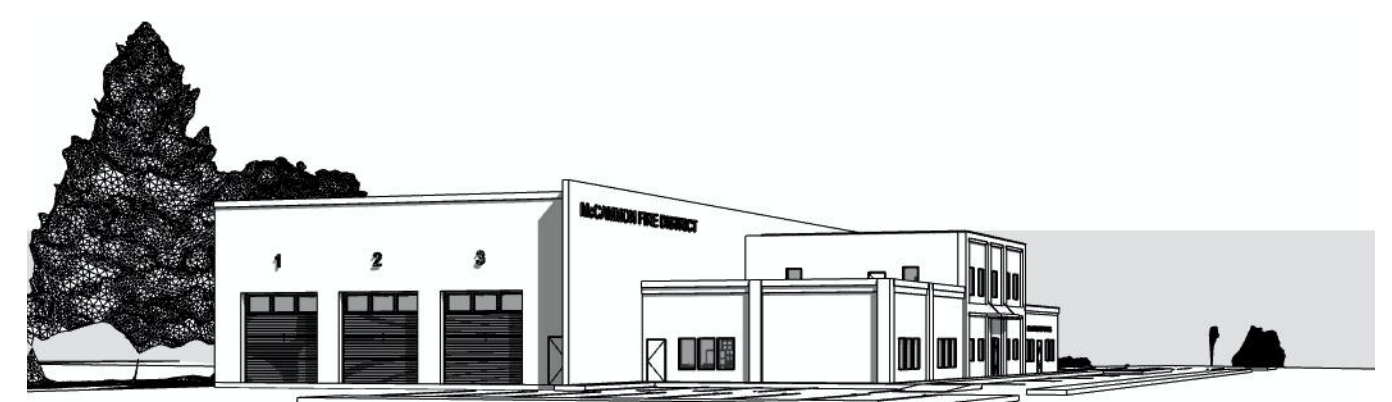
NE Corner



East Facade



SE Corner



South Approach

McCammon Fire Station

SITE CONTEXT & VIEWS



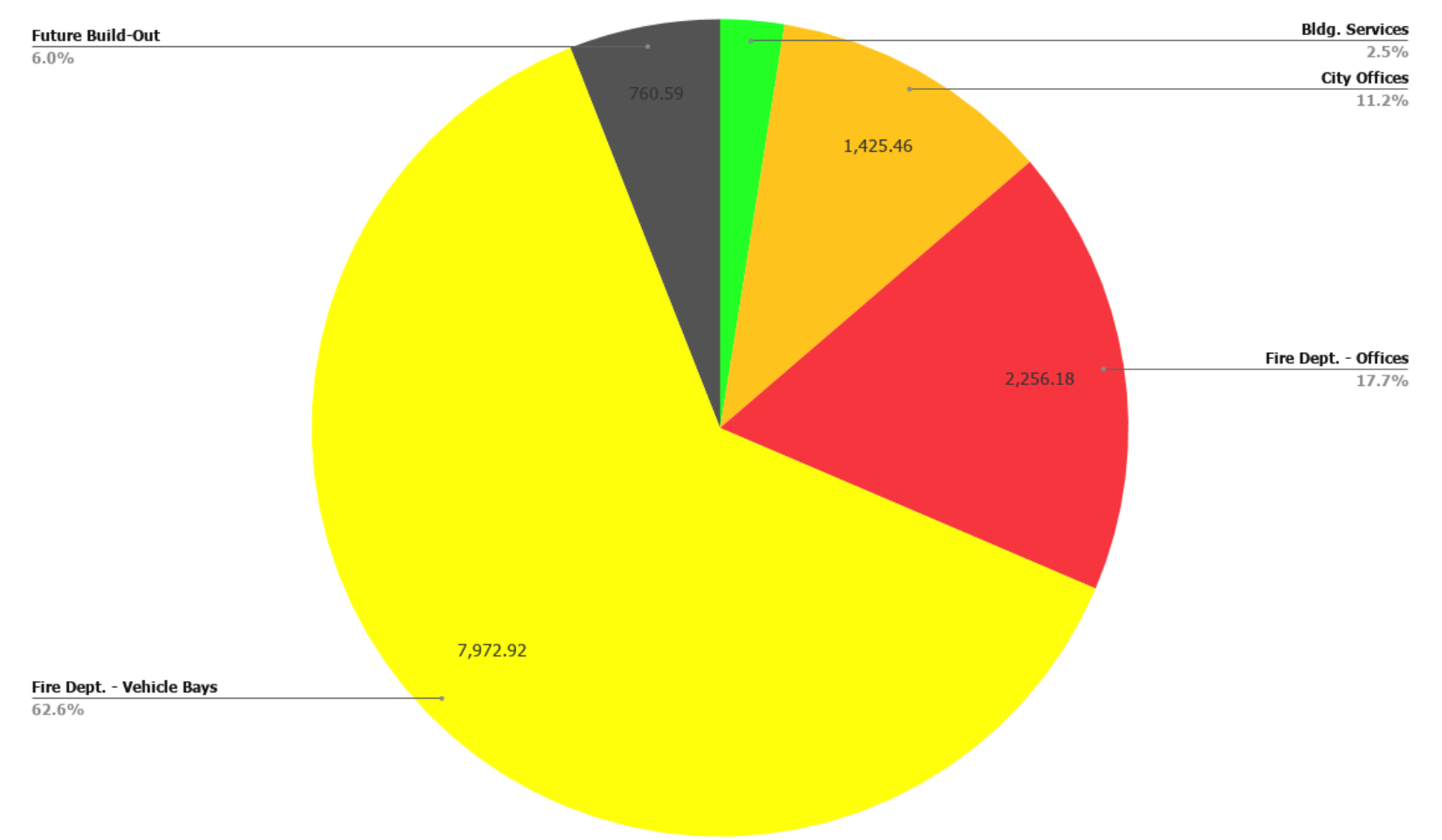
RESIN
ARCHITECTURE

305 1st STREET,
IDAHO FALLS, ID 83401
PH: 208.757.5700
www.resinarchitecture.com

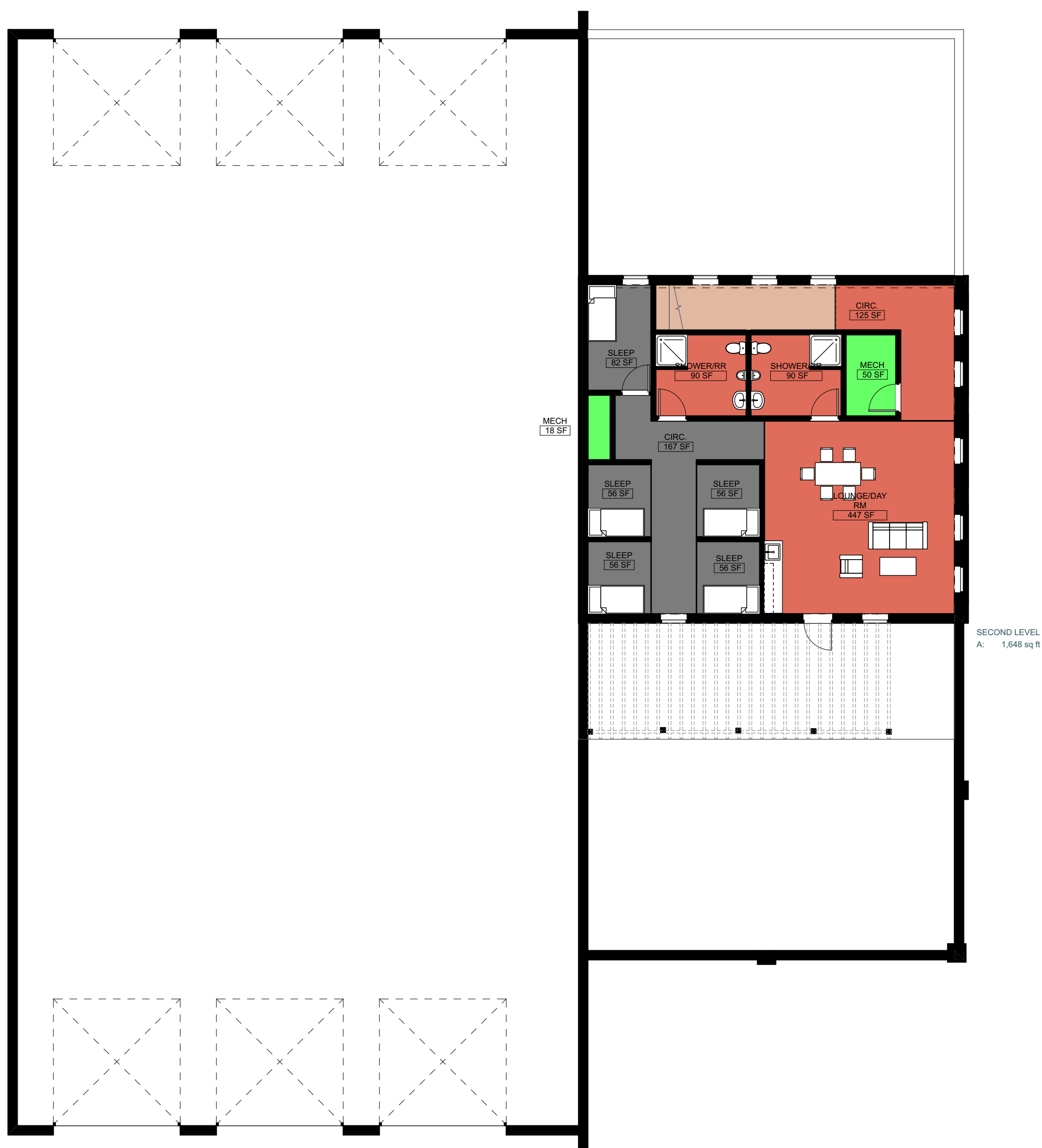
4/30/21



- FIRE STATION - OFFICES & TRAINING
- FIRE STATION - VEHICLE BAY
- CITY OFFICES
- BUILDING SERVICES
- SHARED USE - FIRE & COMMUNITY
- FUTURE BUILD-OUT



First Floor Plan



Space Allocations Summary			
Zone Category	Home Story Number	Zone Name	Calculated Area
BLDG. SERVICES			
	1	ELEC	40.00
	1	JAN.	36.25
	1	RR	96.00
	1	STOR./ MECH.	81.34
	2	MECH	67.79
			321.38 sq ft
CITY OFFICES			
	1	AV	20.00
	1	CIRC.	217.17
	1	CITY RECORDS	220.00
	1	MAYOR'S OFFICE	120.00
	1	MULTIPURPOSE RM	728.29
	1	OFFICE	120.00
			1,425.46 sq ft
FIRE DEPT. - OFFICES			
	1	CIRC.	421.77
	1	OFFICE	240.02
	1	STAIR	83.75
	1	STORAGE, TABLES/ CHAIRS	153.99
	1	TRAINING	603.92
	2	CIRC.	125.42
	2	LOUNGE/DAY RM	447.31
	2	SHOWER/RR	180.00
			2,256.18 sq ft
FIRE DEPT. - TRUCK BAYS			
	1	LAUNDRY	102.50
	1	SCBA/CLEAN RM	156.00
	1	STORAGE, EQUIPMENT	154.42
	1	STORAGE, GEAR	140.00
	1	VEHICLE PARKING	7,400.00
	1	WASH OFF	20.00
			7,972.92 sq ft
FUTURE			
	1	EVIDENCE	87.50
	1	FUTURE OFFICE EXPANSION	200.00
	2	CIRC.	167.42
	2	SLEEP	305.67
			760.59 sq ft
			12,736.53 sq ft

Second Floor Plan

Space Allocation Summary

McCammon Fire Station

SCHEMATIC PLANS & USES



RESIN
ARCHITECTURE

305 1st STREET,
IDAHO FALLS, ID 83401
PH: 208.757.5700
www.resinarchitecture.com

4/30/21